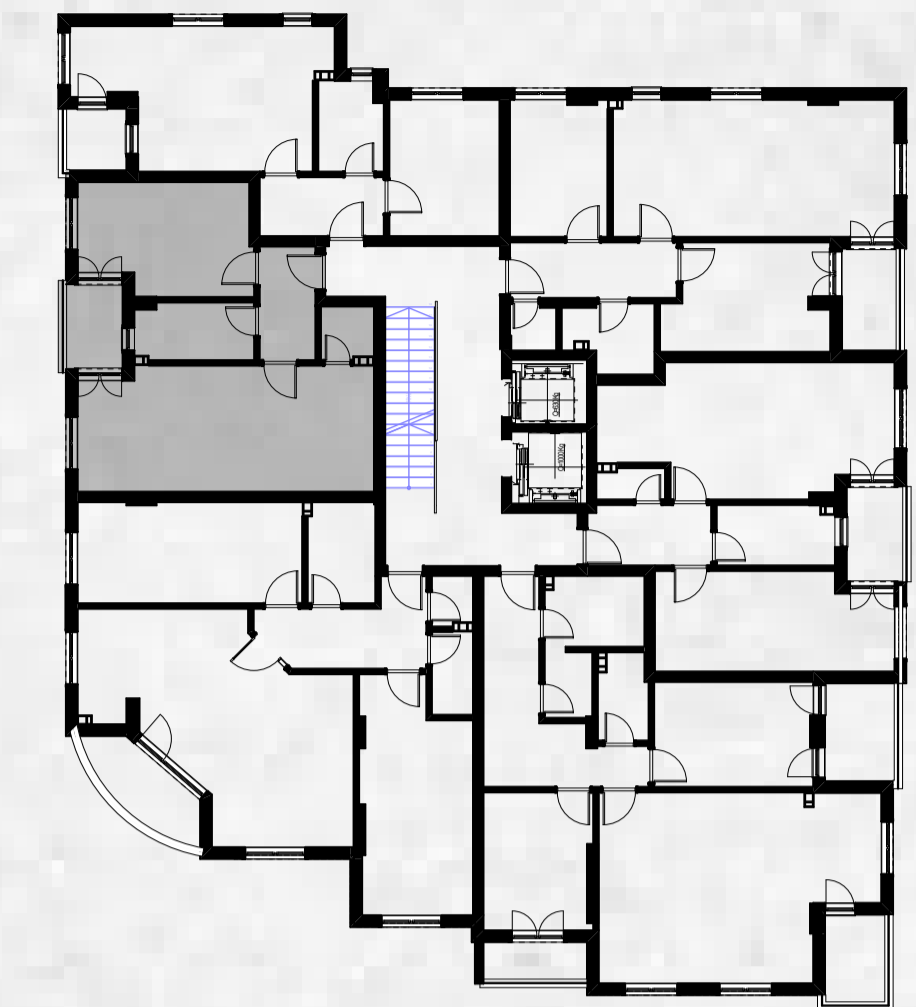


DVOSOBAN STAN



R 1:25



R 1:200

52.72 m²

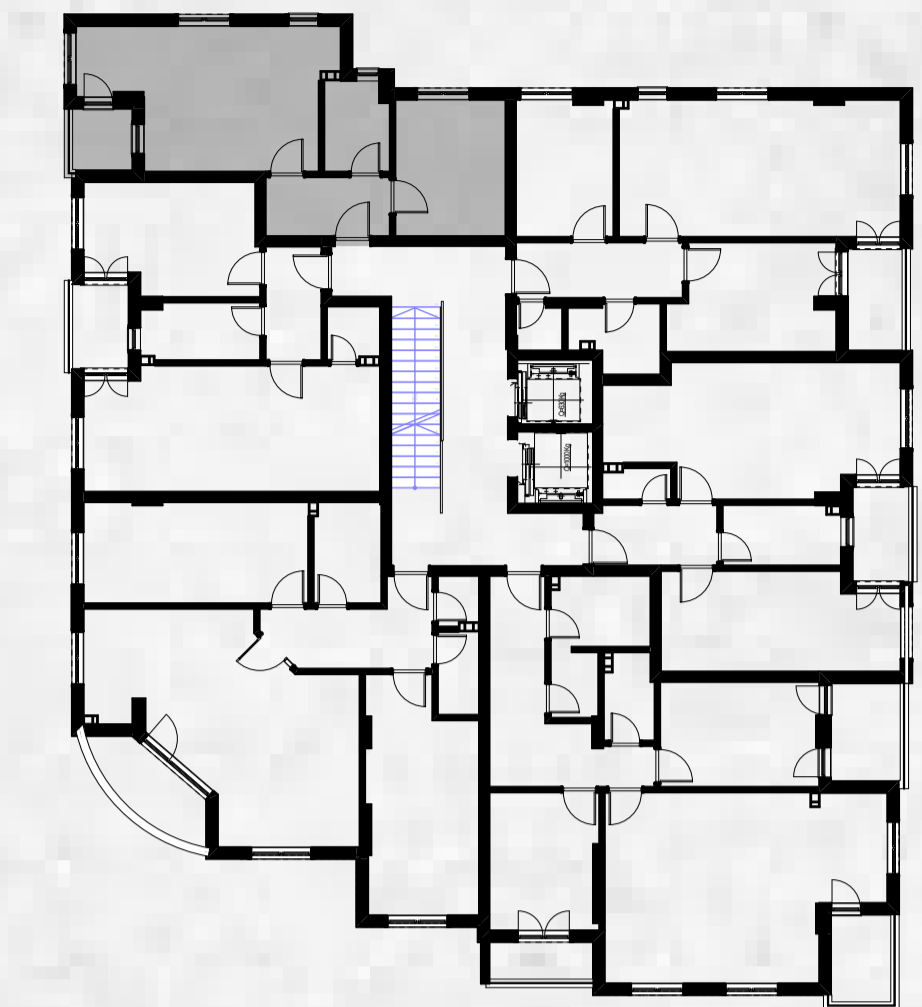
Stan 01, 07, 13, 19, 25, 31

DNEVNI BOR/TRPEZARIJA	Tarket	25.45	2,232.00
HODNIK	Tarket	4.40	892.00
KUPATILO 1	Keramika	4.67	937.00
OSTAVA	Keramika	1.94	563.00
SOBA 1	Tarket	12.94	1,540.00
TERASA	Keramika	3.32	744.00
		52.72 m²	6,908.00 cm

DVOSOBAN STAN



R 1:25



R 1:200

43.83 m²

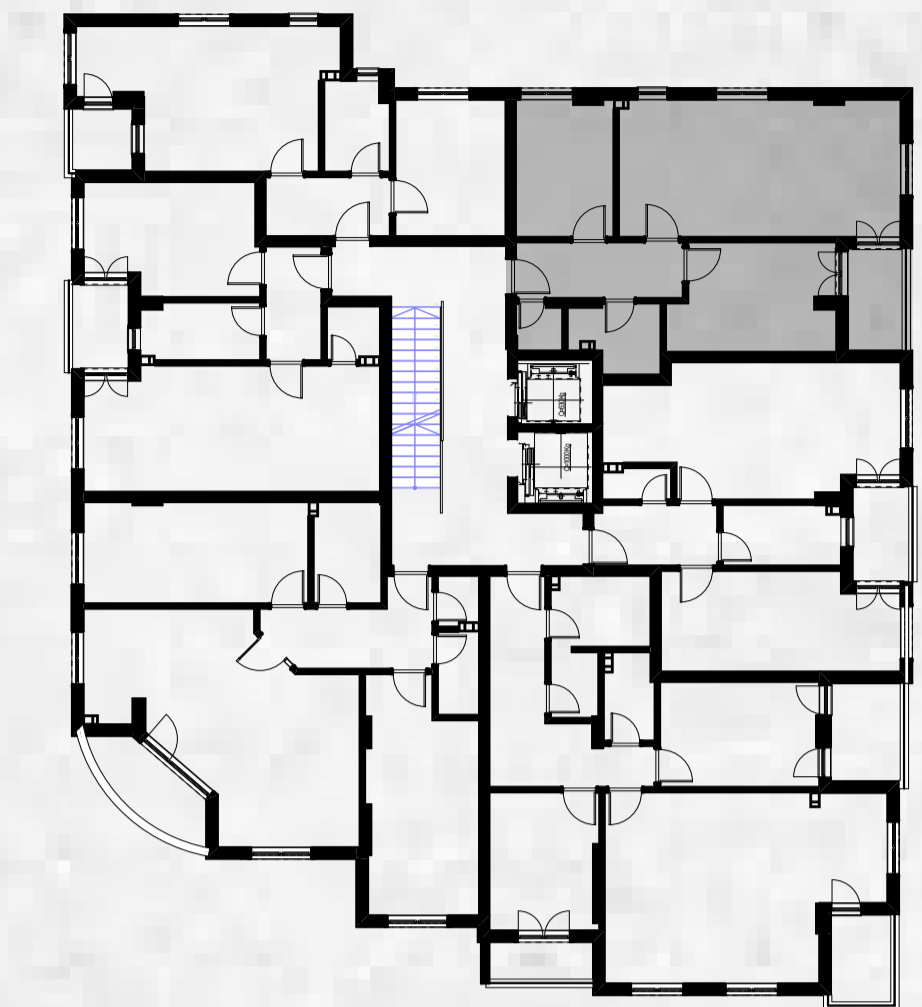
Stan 02, 08, 14, 20, 26, 32

DNEVNI BOR	Tarket	21.73	2,185.00
HODNIK	Tarket	5.09	966.00
KUPATILO	Keramika	3.98	825.00
SOBA 1	Tarket	10.46	1,301.00
TERASA 1	Keramika	2.57	641.00
		43.83 m ²	5,918.00 cm

TROSOBAN STAN



R 1:25



R 1:200

64.01 m²

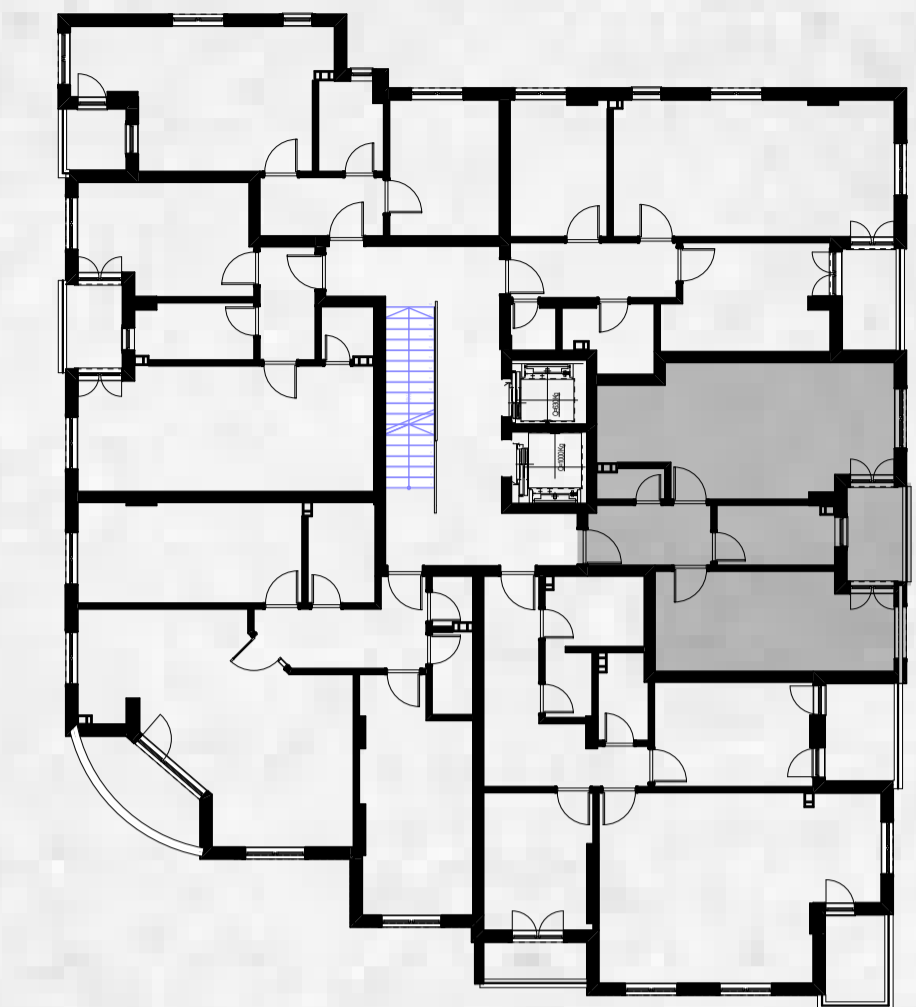
Stan 03, 09, 15, 21, 27, 33

DNEVNI BOR	Tarket	26.80	2,230.00
HODNIK	Tarket	6.46	1,175.00
KUPATILO 1	Keramika	3.91	865.00
SOBA 1	Tarket	11.85	1,594.00
SOBA 2	Tarket	9.24	1,255.00
TERASA	Keramika	4.30	858.00
WC	Keramika	1.45	499.00
		64.01 m²	8,476.00 cm

DVOSOBAN STAN



R 1:25



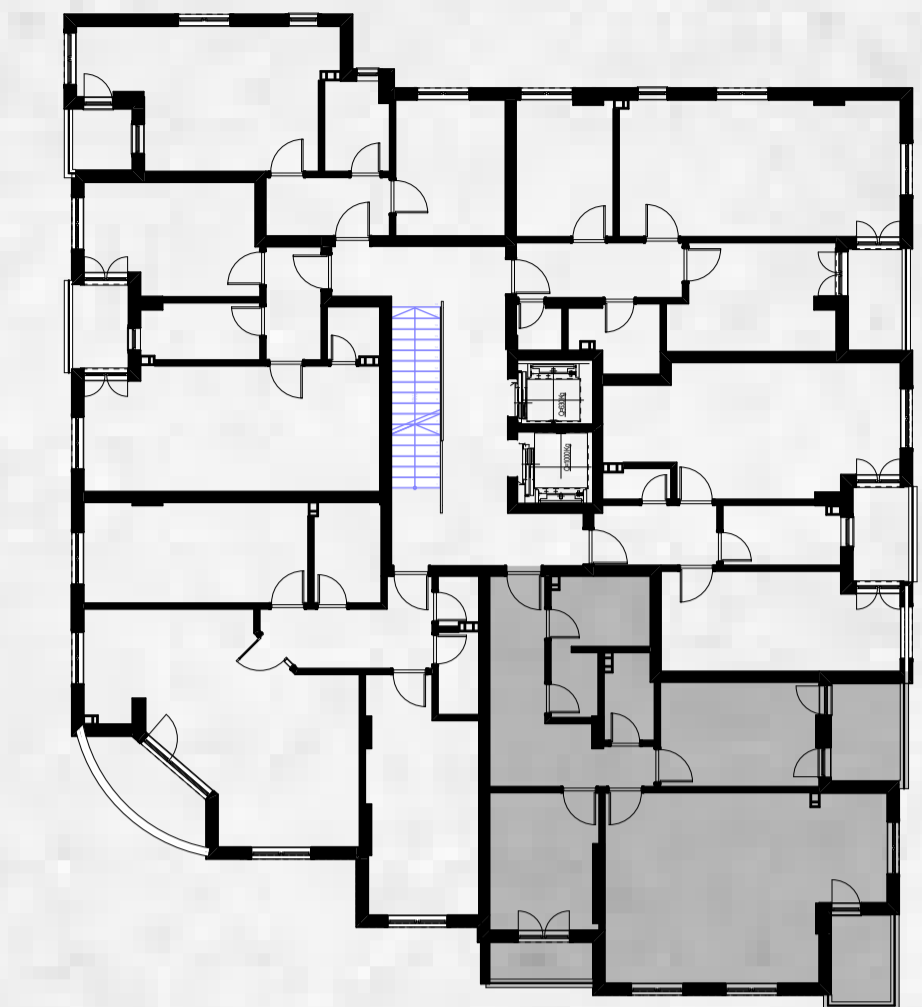
R 1:200

55.50 m²

Stan 04, 10, 16, 22, 28, 34

DNEVNI BOR/TRPEZARIJA	Tarket	24.41	2,305.00
HODNIK	Tarket	5.16	973.00
KUPATILO 1	Keramika	4.91	944.00
OSTAVA	Keramika	1.45	528.00
SOBA 1	Tarket	15.84	1,797.00
TERASA	Keramika	3.73	800.00
		55.50 m ²	7,347.00 cm

TROSOBAN STAN



R 1:200



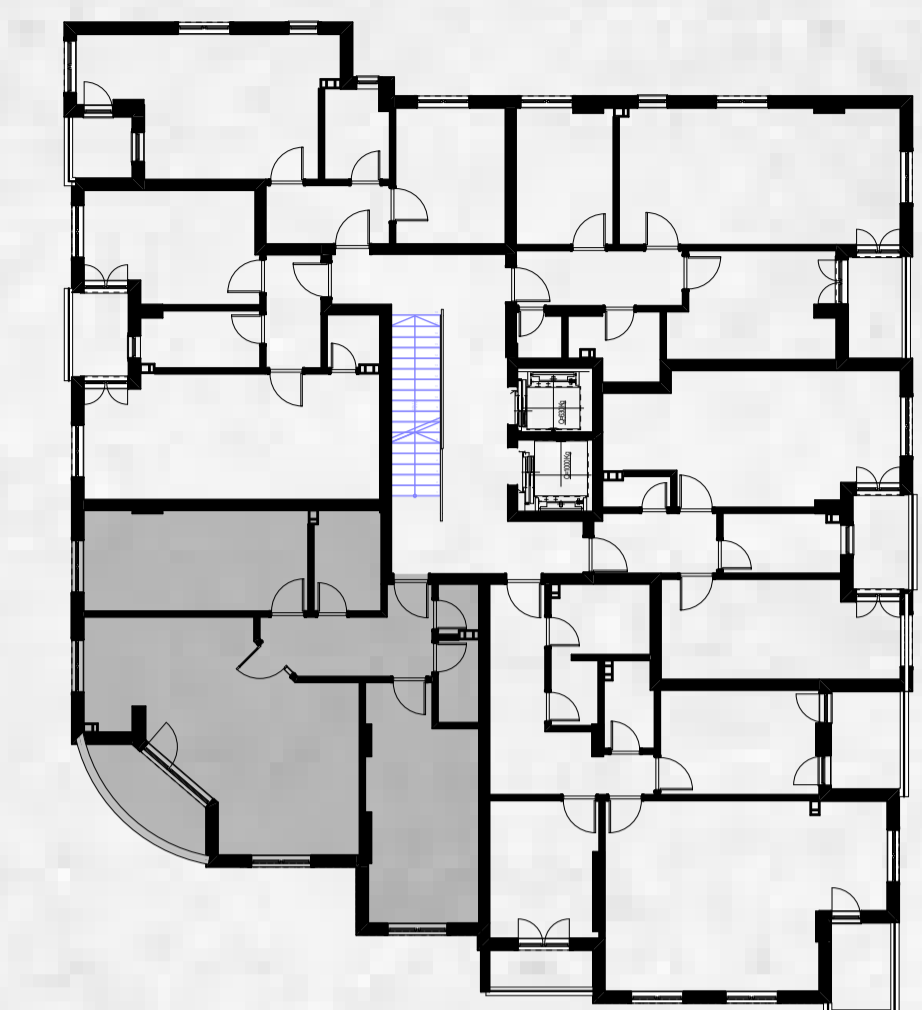
R 1:25

87.92 m²

Stan 05, 11, 17, 23, 29, 35

DNEVNI BOR/TRPEZARIJA	Tarket	33.75	2,527.00
HODNIK	Tarket	12.01	1,994.00
KUPATILO	Keramika	4.87	900.00
OSTAVA	Keramika	3.03	734.00
SOBA 1	Tarket	11.54	1,411.00
SOBA 2	Tarket	10.26	1,342.00
TERASA 01	Keramika	4.73	883.00
TERASA 02	Keramika	3.64	777.00
TERASA 03	Keramika	1.92	702.00
WC	Keramika	2.17	597.00
		87.92 m²	11,867.00 cm

TROSOBAN STAN



R 1:200

85.81 m²

Stan 06, 12, 18, 24, 30, 36

DNEVNI BOR/TRPEZARIJA	Tarket	31.83	2,688.43
HODNIK	Tarket	7.75	1,344.35
KUPATILO	Keramika	4.71	890.00
OSTAVA	Keramika	1.40	483.00
SOBA 1	Tarket	15.80	1,729.00
SOBA 2	Tarket	17.16	1,925.00
TERASA	Keramika	4.80	961.82
WC	Keramika	2.36	653.00
		85.81 m²	10,674.60 cm